

# INDEX

## Wall Tiles 200x300mm

Ordinary white series..... 01

Ordinary Ivory series..... 09

White highlighter series..... 15

Creative highlighter series..... 17

Ivory highlighter series..... 19

P.Green & T.Blue series..... 20

Ordinary Pink series..... 21

Ordinary Red-Brown series..... 22

Ordinary Black series..... 23

Plain colour series..... 25

## Floor Tiles 300x300mm

Plain colour series..... 26

Antiskid series..... 27

200x300mm | 300x300mm  
Wall / Floor Tiles collection



301



302



303



304



305



306



307



308



309



310



311



312



313



314



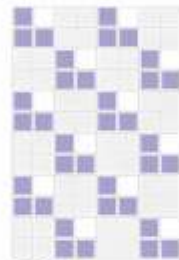
315



316



317



318



319



320



321



322



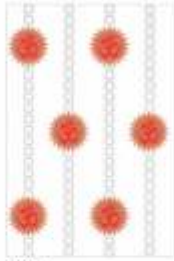
323



324



325



326



327



328



329



330



331



332



333



334



335



336



337



338



339



340



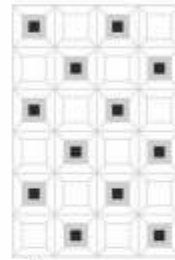
341



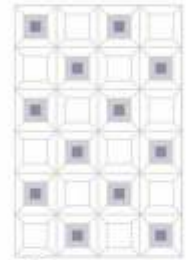
342



343



344



345



346



347



348



349



350



351



352



353



354



355



356



357



358



359



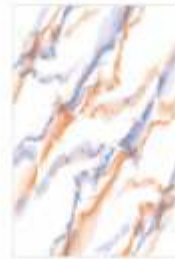
360



361



362



363



364



365



366



367



368



369



370



371



372



373



374



375



376



377



378



379



380



381



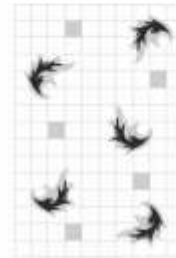
382



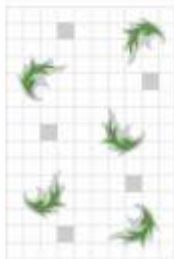
383



384



385



386



387



388



389



390



391



392



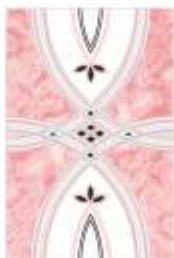
393



394



395



396



397



398



399



400



401



402



403



404



405



406



407



408



409



410



411



412



413



414



415



416



417



418



419



420



421



422



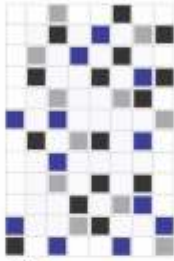
423



424



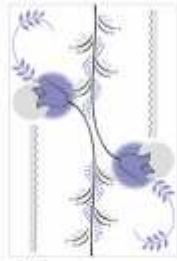
425



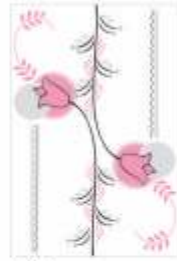
426



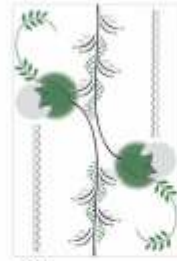
427



428



429



430



431



432



433



434



435



436



437



438



439



440



441



442



443



444



445



446



447



448



449



450



451



452



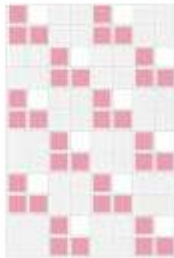
453



454



455



456



457



458



459



460



461



462



463



464



465



466



467



468



469



470



471



472



473



474



475



476



477



478



479



480



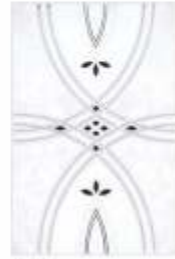
481



482



483



484



485



486



487



488



489



490



491



492



493



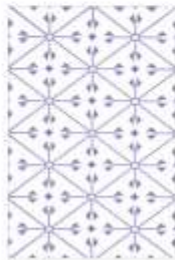
494



495



496



497



498



499



500



601



602



603



604



605



606



607



608



609



610



611



612



613



614



615



616



617



618



619



620



621



622



623



624



625



626



627



628



629



630



631



632



633



634



635



636



637



638



639



640



641



642



643



644



645



646



647



648



649



650



651



652



653



654



655



656



657



658



659



660



661



662



663



664



665



666



667



668



669



670



671



672



673



674



675



676



677



678



679



680



681



682



683



684



685



686



687



688



689



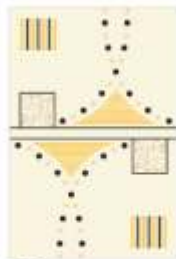
690



691



692



693



694



695



696



697



698



699



700



701



702



703



704



705



706



707



708



709



710



711



712



713



714



715



716



717



718



719



720



721



722



723



724



725



726



727



728



729



730



731



732



733



734



735



736



737



738



739



740



741



742



743



744



745



746



747



748



749



750



101



102



103



104



105



106



107



108



109



110



111



112



113



114



115



116



117



118



119



120



121



122



123



124



125



126



127



128



129



130



131



132



133



134



135



136



137



138



139



140



141



142



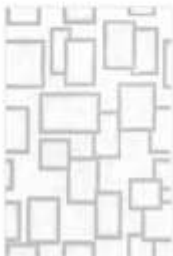
143



144



145



146



147



148



149



150



151



152



153



154



155



156



157



158



159



160



161



162



163



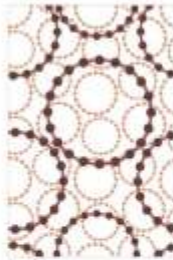
164



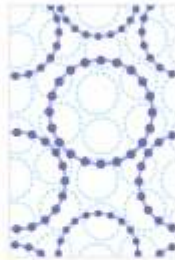
165



166



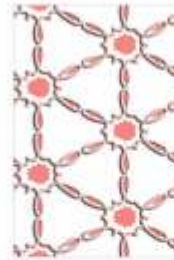
167



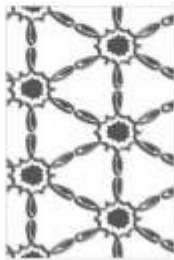
168



169



170



171



172



173



174



175





201



202



203



204



205



206



207



208



209



210



211



212



213



214



215



216



217



218



219



220



221



222



223



224



225



851



852



853



854



855



856



857



858



859



860

**Ordinary T.Blue Series**



901



902



903



904



905



906



907



908



909



910



951



952



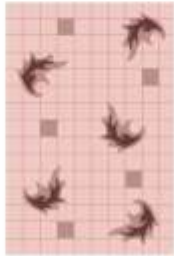
953



954



955



956



957



958



959



960





1001



1002



1003



1004



1005



1006



1007



1008



1009



1010



1011



1012



1013



1014



1015



1016



1017



1018



1019



1020



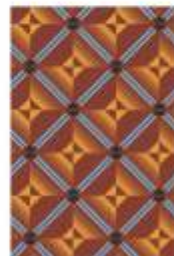
1021



1022



1023



1024



1025



1101



1102



1103



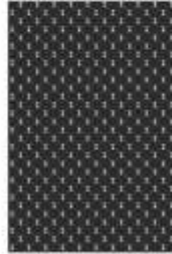
1104



1105



1106



1107



1108



1109



1110



1111



1112



1113



1114



1115



1116



1117



1118



1119



1120



1121



1122



1123



1124



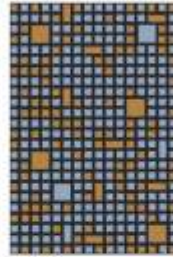
1125



1126



1127



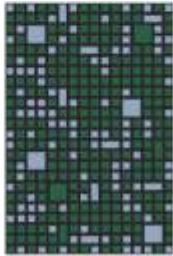
1128



1129



1130



1131



1132



1133



1134



1135



1136



1137



1138



1139



1140



1141



1142



1143



1144



1145



1146



1147



1148



1149



1160

Running Colour



White



Ivory



Grey



T.Blue



Pink

Special Colour



C.Brown



Magenta



Aqva. Green



M.Green



Black



Co.Brown



M.Yellow



Ai.Blue



Yellow

Exclusive Colour



Bo.Green



R.Blue



Blood Red



Orange



White



Grey



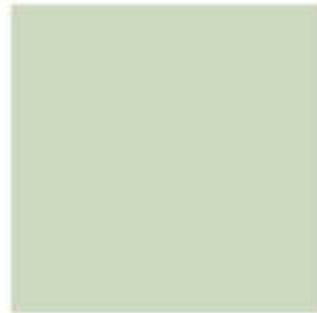
Ivory



T. Blue



Pink



P. Green

**SPECIAL PLAIN COLOURS**



Black



Magenta



Terracotta

**EXTRA COLOURS**



Copper Cloudy



Alp. Blue



Antiskid White



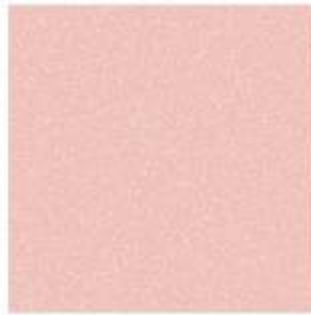
Antiskid Grey



Antiskid Ivory



Antiskid T. Blue



Antiskid Pink



Antiskid P. Green

**SPECIAL COLOURS**



Antiskid Black



Antiskid Magenta



Antiskid Terracotta



Antiskid B. Green



Antiskid Alp. Blue



Copper Cloudy  
Ordinary FLOOR TILES



## Technical Specification

| CHARACTERISTICS                        | STANDARDS AS PER EN-159 B 333 | ETTO TILES VALUE  |
|--|-------------------------------|---|
| <b>DIMENSION &amp; SURFACE QUALITY</b> |                               |   |
| 1) Dimension                           | ±0.5%                         | ±0.2%   |
| 2) Deviation in Thickness              | ±0.5 mm                       | ±0.3 mm   |
| 3) Straightness of sides               | ±0.3                          | ±0.2%   |
| 4) Rectangularity                      | ±0.5%                         | ±0.3%   |
| 5) Surface Fitness                     | ±0.5%                         | ±0.3%   |
| 6) Surface Quality                     | Min 95%                       | Min 96%   |
| <b>PHYSICAL PROPERTIES</b>             |                               |   |
| 1) Scratch hardness (Mohs)             | Min 3                         | Min 3   |
| 2) Crazeing                            | 1 Cycle                       | No Crazeing at 5 Cycles   |
| <b>CHEMICAL PROPERTIES</b>             |                               |   |
| 1) Staining Resistance                 | Min Class 2                   | Resistance to all Acids and Alkalies & Household Chemicals, except Hydro Flouric Acid |
| 2) Household Chemical                  | Min Class B                   |   |
| <b>THERMAL PROPERTIES</b>              |                               |   |
| 1) Thermal Shock                       | Resistant to 10 Cycles        | CONFORMS  |
| 2) Thermal Expansion                   | Max-9E-06                     | CONFORMS  |

### Packing Detail

| Sr. No. |                     | Size          | Pieces Per Box | Area/Box Sq. Feet | Wt./Box Kgs.   |
|---------|---------------------|---------------|----------------|-------------------|----------------|
| 1.      | <b>FOR DOMESTIC</b> | 200mm x 300mm | 12 Pcs.        | 0.72              | 6.5 Kg.        |
| 2.      | <b>FOR EXPORT</b>   | 200mm x 300mm | 16 Pcs.        | 0.96              | 9 Kg. (APPROX) |

**Note :** Colours shown are as accurate as the limitations of the printing process will allow. prospective customers are advised to inspect a sample of th tile before ordering every effort has been made to ensure the accuracy of the information given. however, the company reserves the right to change the specifications without prior notices.